

# Vantage Centre

720 Executive Park Dr, Greenwood, IN 46142



## OFFERING SUMMARY

**AVAILABLE SF:** 1,450 SF

**LEASE RATE:** \$15/SF MG

**ZONING:** CM

**MARKET:** Greenwood

**TRAFFIC COUNT:** Over 19,000 ADT

## PROPERTY DESCRIPTION

Looking for office space for your business? Look no further. The Vantage Centre is conveniently located in a highly desirable location near the new retail development at the Greenwood Fieldhouse. This charming office property has only a few vacancies left - the smallest vacancy at 450 SF and the largest vacancy at 1000 SF.

## PROPERTY OVERVIEW

- Easy accessibility on Smith Valley Road & US-31
- Executive-style office suites
- Updated finishes
- Walking distance to restaurants & shops
- 1st 2 Months Free Rent

**JOSIE LAVELY**  
Broker – Merrill Property Group  
P: 270-804-2473  
josie@merrillpropertygroup.com

# Vantage Centre

720 Executive Park Dr, Greenwood, IN 46142



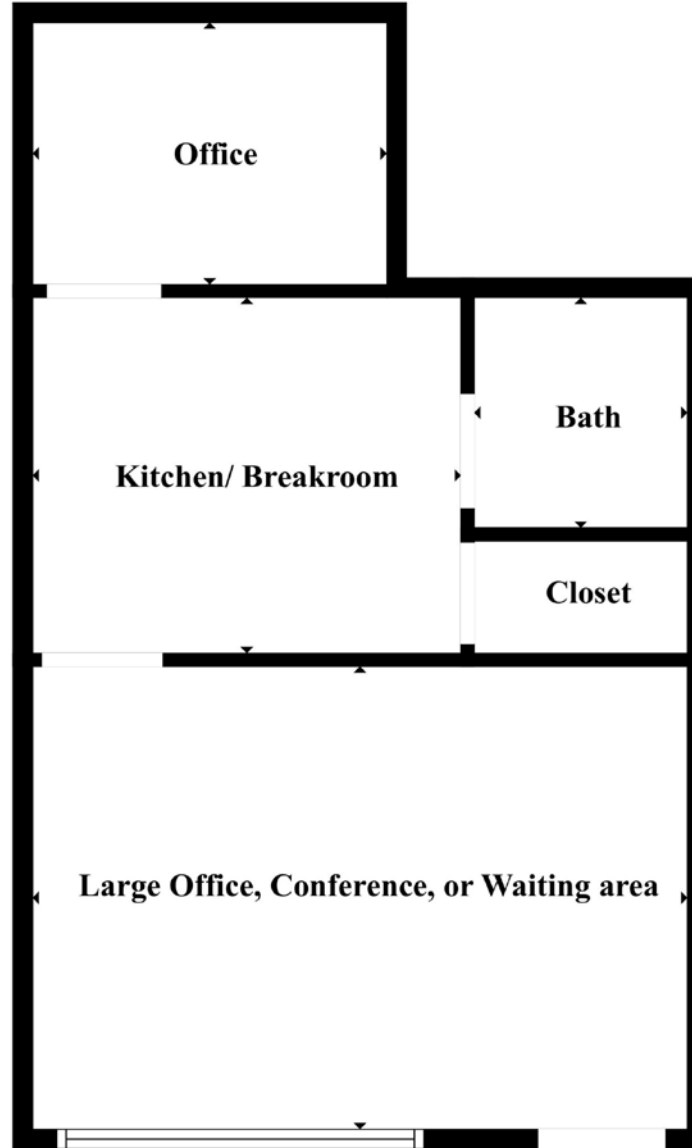
Conference Room



Breakroom



Office



## SUITE 1800

Available SF	450
Lease Rate	\$825/mo
Offices	1
Breakroom	1
Bathroom	1
Conference	1

**JOSIE LAVEY**

Broker – Merrill Property Group

P: 270-804-2473

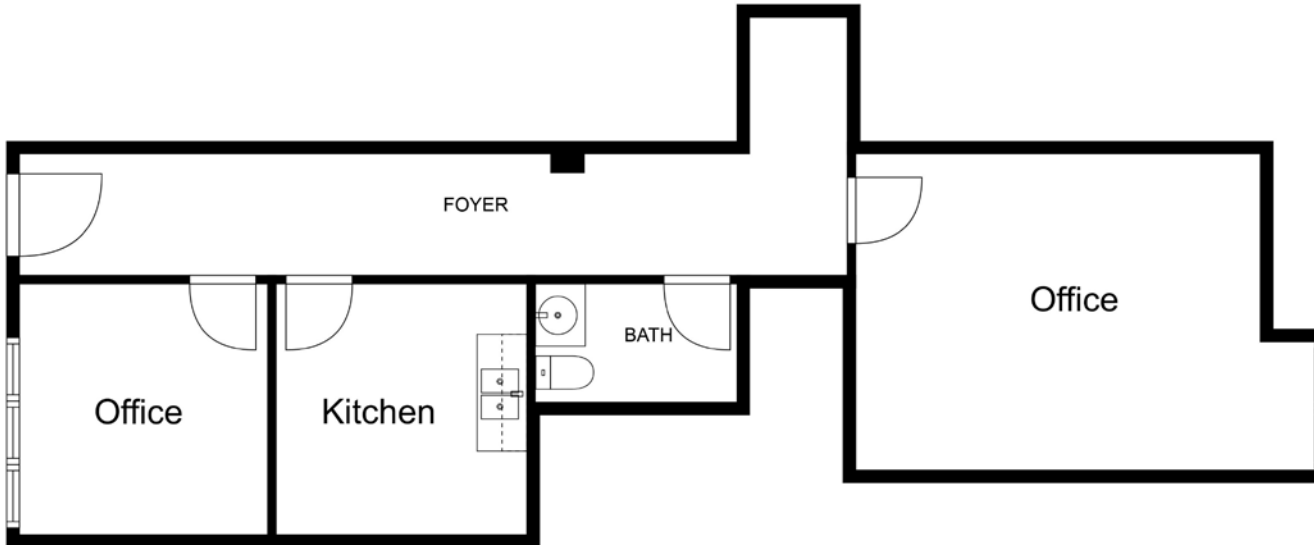
josie@merrillpropertygroup.com

# Vantage Centre

720 Executive Park Dr, Greenwood, IN 46142



## SUITE 3400B



Available SF	1,000
Lease Rate	\$1250/mo
Offices	2
Breakroom	1
Bathroom	1
Conference	Shared

MEASUREMENTS ARE CALCULATED BY CUBICASA TECHNOLOGY. DEEMED HIGHLY RELIABLE BUT NOT GUARANTEED.

*Currently under renovation – photos coming soon*

**JOSIE LAVEY**

Broker – Merrill Property Group

P: 270-804-2473

josie@merrillpropertygroup.com